

Grant and Per Diem Intensive Case Management Services

What is the GPD Intensive Case Management Service Program?

Grant and Per Diem (GPD) intensive case management program offers time-limited case management services to support housing retention for Veterans in permanent housing who would benefit from resources and skills that promote their housing stability.

What is unique about the GPD Case Management Program?

The GPD Intensive Case Management uses Critical Time Intervention (CTI), a *6-month case management practice that mobilizes support for individuals undergoing housing and care transitions*. CTI facilitates community integration and continuity of care by *identifying and solidifying connections to community and support systems during these critical transition periods*. CTI structures the 6-month case management period across three phases, helps Veterans develop and attain goals, and builds a care network the Veteran can call upon once the program has ended.

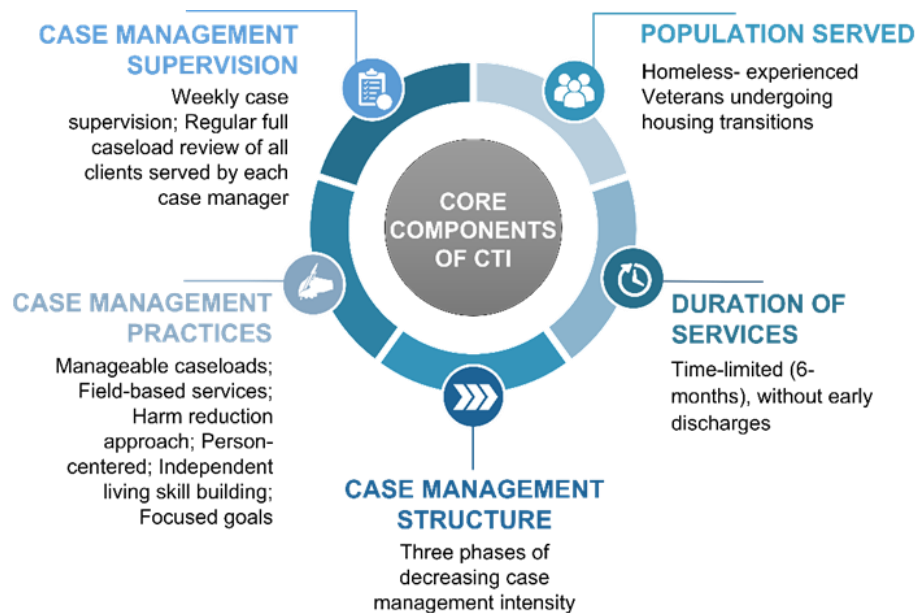
CTI Case Manager has:

- A firm understanding of the personal challenges and systemic barriers experienced by vulnerable people during significant life transitions
- An open, flexible, and optimistic approach to the work that does not make unwarranted assumptions or judgments about the Veterans' situation, identity, behavior, appearance or beliefs
- Adeptness at interdisciplinary teamwork
- Experience with community work
- Experience with engaging and building alliances with other providers to assist with continuity of care for the Veteran
- A strong ethical sense and respect for the dignity and worth of all Veterans
- Willingness to step back and monitor how well Veterans and resources are managing routine activity and crisis events. This stance fosters personal autonomy and prepares Veterans for the end of the CTI relationship.

Who is eligible for the program?

The GPD case manager services program is available for all veterans who require short term Intensive Case Management services to maintain their housing stability. The program has no income guidelines and is free to the Veteran and immediate household members. To qualify, Veterans must be in permanent housing and may not be receiving case management services

Utilizing CTI in GPD Case Management Programs:



What is included in the program?

GPD Case Management Services include, but are not limited to:

- In-home visits
- Budgeting/Financial Management education and assistance
- Support applying for or renewing VA and State benefits
- Assistance in maintaining connections to Medical and Mental Health Care providers
- Assistance connecting to new health care providers within the community and at the VA
- Tenants' Rights and Responsibilities education
- Employment services and supports
- Development and maintaining natural supports (friends and family)
- Participation in case conference with community and VA providers
- Assisting with applying for Home Health Care Services
- Referrals to relevant VA or Community Services
- Providing and coordinating educational and life skills activities